



Simplifying GRI Reporting with CCR

Accredited expertise. Intelligent reporting.

www.ccr.earth

Leading GRI-Aligned Sustainability Intelligence

Climate Change Response (CCR) helps organisations translate sustainability efforts into globally credible, audit-ready disclosures.

As a The Global Reporting Initiative (GRI)-accredited platform and consultancy, we combine deep reporting expertise with intelligent digital solutions making GRI alignment accurate, efficient, and insightful.

Our accredited professionals and AI enabled data-driven systems support your entire sustainability journey - from defining boundaries to publishing a verified, GRI-aligned report ready for global submission.

Aligning with GRI: Global Credibility, Simplified

GRI Standards are the world's most widely adopted framework for sustainability disclosures—setting the benchmark for transparency and accountability.

CCR ensures your sustainability reporting fully aligns with GRI's latest Universal, Sector, and Topic-specific Standards.

Whether you are reporting for the first time or refining your disclosures to meet advanced expectations, our approach helps you:



Interpret GRI Standards correctly and consistently



Identify material topics relevant to your operations and stakeholders



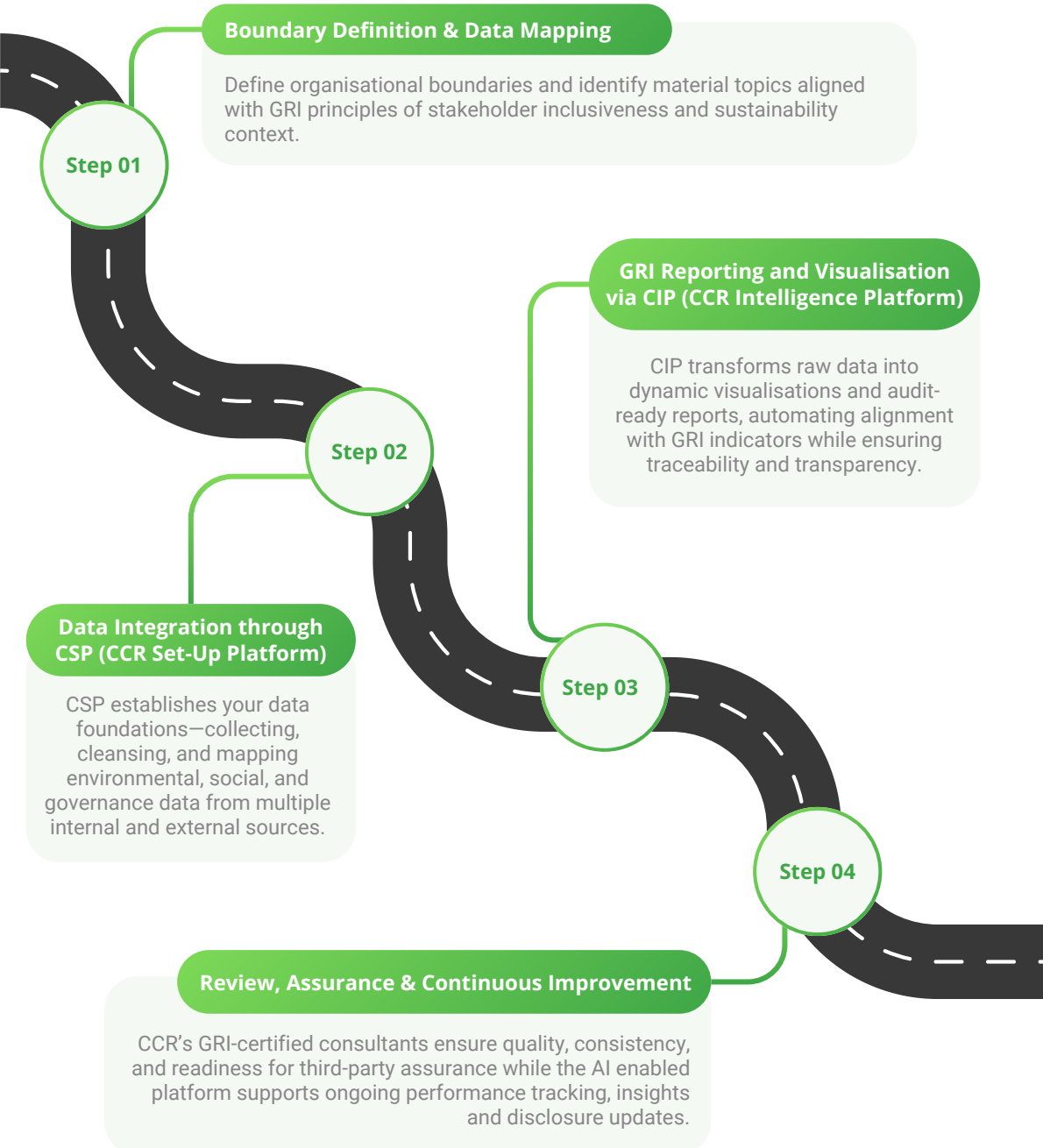
Map existing data and KPIs against GRI indicators



Ensure comparability, accuracy, and completeness across all reported metrics

Our Roadmap to Seamless GRI Alignment

CCR's consulting expertise and digital intelligence come together through a well-defined roadmap:



Key Features of CCR's GRI Intelligence Suite



GRI-Accredited Platform

Officially recognised for full alignment with GRI Standards.



Audit-Ready Data Trail

Trace each indicator back to its verified source.



Real-Time Analytics & Benchmarking

Measure ESG performance and materiality trends.



Automated Framework Mapping

Cross-mapping between GRI, ISSB, CSRD, TCFD, and other global and national frameworks.



Collaborative Workflows

Enable teams to co-create, validate, and publish GRI reports efficiently.



Visual Dashboards

Transform compliance into clear, engaging insights for stakeholders.

Why Choose CCR



GRI-Certified Consultants :

with deep regulatory and sustainability experience



Accredited Intelligence Platform:

ensuring recognised compliance and credibility



Integrated CSP-CIP Architecture :

for seamless data management and reporting



AI Tailored Advisory for Every Sector:

from manufacturing and infrastructure to government and finance



Continuous Alignment :

with evolving global disclosure standards

Our strength lies in bridging expertise and intelligence—offering both consulting depth and digital precision to make sustainability reporting future-ready.

Tailored for Every Sector

Each industry faces unique sustainability challenges—and CCR's sector frameworks reflect that. Our GRI-aligned templates and insights are designed for:



Energy & Utilities:

Emission intensity, resilience, and transition reporting



Manufacturing & Industry:

Supply chain disclosures and circular economy metrics



Finance & Investment:

Portfolio-level impact and double materiality



Public Sector & Cities:

Governance, social impact, and infrastructure sustainability



Agriculture & Natural Resources:

Land, biodiversity, and community alignment

CCR's platform enables quick deployment of sector-specific reporting modules, saving time while maintaining full compliance.




Partner with CCR


Achieve complete, consistent, and credible GRI disclosures—powered by accredited expertise and intelligent technology.

CCR transforms sustainability reporting from a compliance exercise into a strategic, data-driven advantage.



Contact us

 www.ccr.earth

 info@ccr.earth



📍 **Australia**
Level 1, 9
The Esplanade
Perth WA 6000
Ph: +61 8 64677144

📍 **USA**
884 Sea Island Ln
Foster City, California
Ph: +1 415 658 9958

📍 **UK**
42 Cranbourne Gardens
London, NW11 0HP
United Kingdom
Ph: +447520636067

📍 **UAE**
A2 IFZA Business Park
Silicon Oasis, Dubai
Ph: +971 56 333 1416

📍 **New Zealand**
60A Olsen Avenue
Hillsborough,
Auckland
Ph: +64 27 4444 7859

📍 **Malaysia**
W-10-6, Subang Square
Jalan SS15/4G, SS15
47500 Subang Jaya
Selangor Darul Ehsan
Malaysia
Ph: +60 17-216 9565

📍 **India**
179/36, 12th B-Main Road
75th E-Cross 6th Block
Rajaji Nagar, Bangalore,
Ph: +91 93504 00005

📍 **Indonesia**
Rukan Permata Senayan
Blok A-29 Jl. Tentara
Pelajar Kebayoran Lama
Jakarta Selatan
Ph: +62 21 5794 0651