



CCR Intelligence Platform

Sustainability Management Simplified

www.ccr.earth

Introduction

Pressure from customers, investors and communities are driving the need for more detailed Climate-Related Disclosures and proactive Sustainability Transformation measures. As awareness of climate action grows across Australia, local regulatory bodies have increasingly enforced requirements for comprehensive disclosures.

This means adapting to evolving regulations and standards that directly impact your operations. Ensuring data integrity and efficiently managing diverse data sources is crucial. Leveraging technology has become essential to effectively navigate the sustainability journey unique to your organisation.

CCR's Intelligence Platform empowers users to seamlessly integrate sustainability initiatives with core business operations, enabling you not only meet stakeholder expectations with confidence but comply with local regulations.

The One-Stop Platform for your Sustainability Journey

The CCR Intelligence Platform is a cloud-based solution crafted to expertly guide organisations through every stage of their sustainability journey. From comprehensive disclosures and greenhouse gas accounting to in-depth value chain assessments, our platform integrates decades of emissions management and decarbonisation expertise with advanced AI-driven technology. This unique combination ensures efficient data management, a superior user experience, and steadfast support in achieving your long-term Climate Action and Sustainability goals.



Key Features

Greenhouse Gas (GHG) Inventorisation

- **GHG Protocol Compliance:**
Complies with the GHG Protocol for emissions inventory
- **Comprehensive Data Collection:**
Collects data across the value chain for Scope 1, 2, and 3 emissions calculations
- **Latest Emission Factors:**
Utilises emission factors from official sources (e.g.: CER) with customisation options
- **Emission Hotspots Tracking:**
Monitors emission hotspots and tracks targets
- **Seamless Data Usage:**
Facilitates the use of GHG emissions data for various reports

Disclosures and Reporting

- **Comprehensive Reporting Frameworks:**
Supports disclosures across major sustainability reporting frameworks and rating systems, including NGERs, GRI, CSRD, ISSB, TCFD, BRSR, DJSI, CDP, and MSCI (to name a few)
- **Structured Reports:**
Downloads and automates sharing of "ready-to-file", structured reports in customisable formats
- **Auto-Mapping Capabilities:**
Ensures that data captured is used for multiple reporting and rating requirements
- **Performance Analysis:**
Provides comparative performance analysis through customisable dashboards

Value Chain Assessment

- **Gap Analysis:**
Identifies gaps and aligns organisational targets with value chain partners
- **Streamlined Data Collection:**
Integrates seamlessly across the entire supplier network, simplifying data collection and analysis, ensuring accurate insights for streamlined sustainability management and regulatory compliance
- **Performance Assessment:**
Evaluates the sustainability performance of the entire value chain
- **Scorecards and Reports:**
Generates reports for value chain partners with scorecards and improvement suggestions



Key Benefits

Transparency and Auditability

Simplifies auditable data trails, reporting requirements, and engages stakeholders with workflows to ensure streamlined data availability and its integrity

Comprehensive Reporting Solutions

User-friendly modules address reporting requirements across multiple sectors and geographies

Efficiency and Productivity

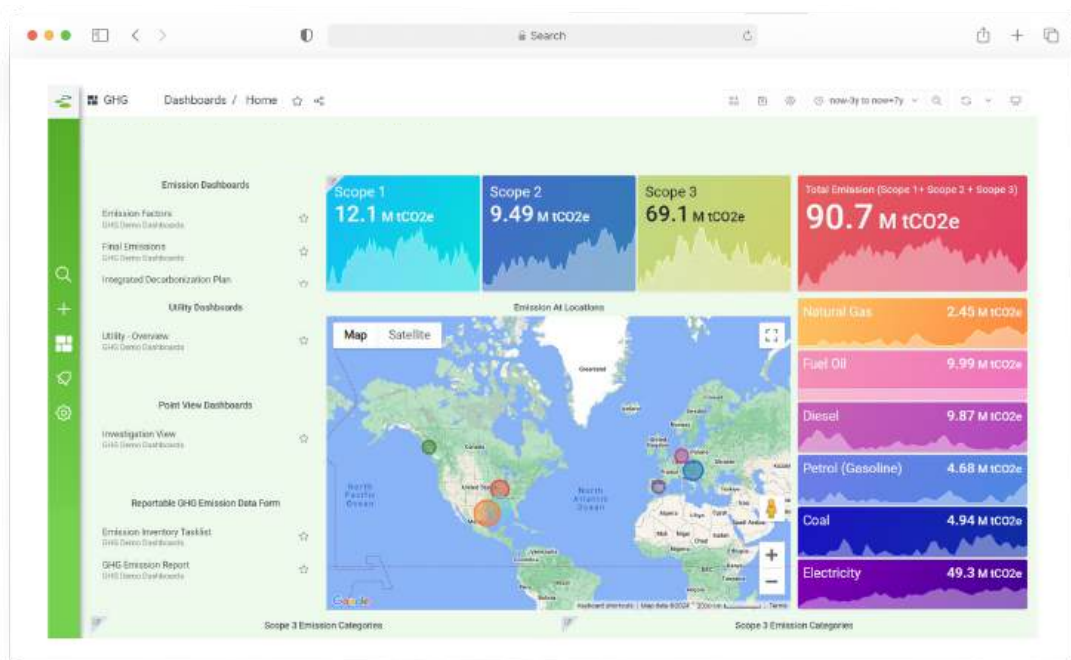
Features like auto-mapping, machine learning, data automation, and a report builder streamline deliverables for optimal stakeholder communication

Secure Platform with Multi-User Access

Allows open or restricted access to data functions and layers based on user-type

Data Automation

Eliminates duplication and ensures a single source of truth by connecting existing data sources like ERPs to the Intelligence Platform



Advanced Analytics & Customisable Visualisations

Sophisticated Analytics Tools:
Compute and build custom mathematical functions for tailored visualisations and in-depth analytics

Dynamic Visualisation Options:
Multi-variable, easy-to-understand data visualisations with customisable charts and tables

Real-Time Monitoring:
Real-time data updates with intuitive graphical displays, accessible from any web-enabled device

Cutting-Edge Tech Utilisation:
Utilise Smart Technologies to effectively plan, track, improve, and achieve Net Zero goals

Historical Data Access:
Provide historical data entry and user-downloadable raw data and infographics via an accessible web dashboard

Dynamic Emission Factors:
Incorporate dynamic emission factor values for flexible data analysis and presentation.

Customisable Dashboards:
Over 30 preconfigured energy dashboards/views provided at handover, with no-code customisation at your fingertips

AI & Augmented Analytics:
Utilise Artificial Intelligence and augmented analytics to find potential efficiency opportunities and predict anomalies before they occur



Efficient Data Access & Management



Data Export Capability:

Export data for reporting and recording purposes in required format



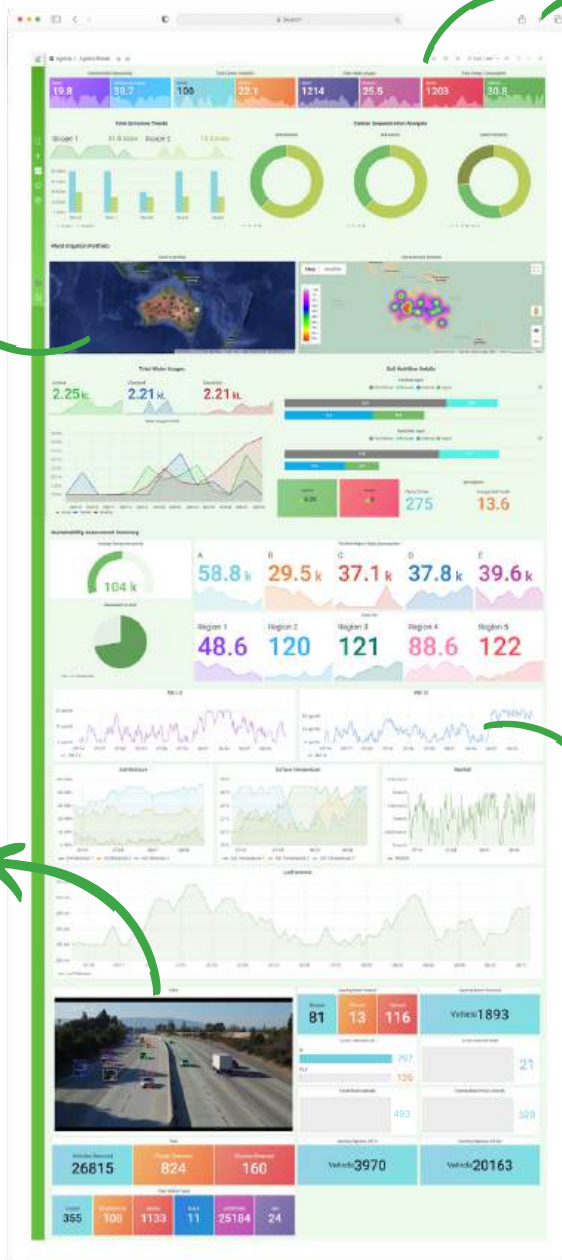
Customisable Data Intervals

Customise data interval settings for precise control over data analysis periods



Public Data Sharing

Generate static URLs for graphs or dashboards for public viewing, with options for public data downloads and embedding in other websites or presentations



Web-Based Monitoring:

Access, download, and monitor data via browsers without the need of a specific desktop or mobile application



Multiple Site Access

Access multiple sites and datasets in real-time via a single platform with multi-user logins



Comprehensive Emissions Tracking

Leverage existing and Industry 4.0 digital technologies to accurately identify and classify Scope 1, 2, and 3 emissions, ensuring robust and precise sustainability reporting

Seamless Data Integration & Automated Collection

Versatile Data Collection

Automatically gather data from IoT devices, business systems, manual entry, utility account platforms, logs, CSV files, third-party sources and PDFs.

Multi-Parametric Integration & Analysis

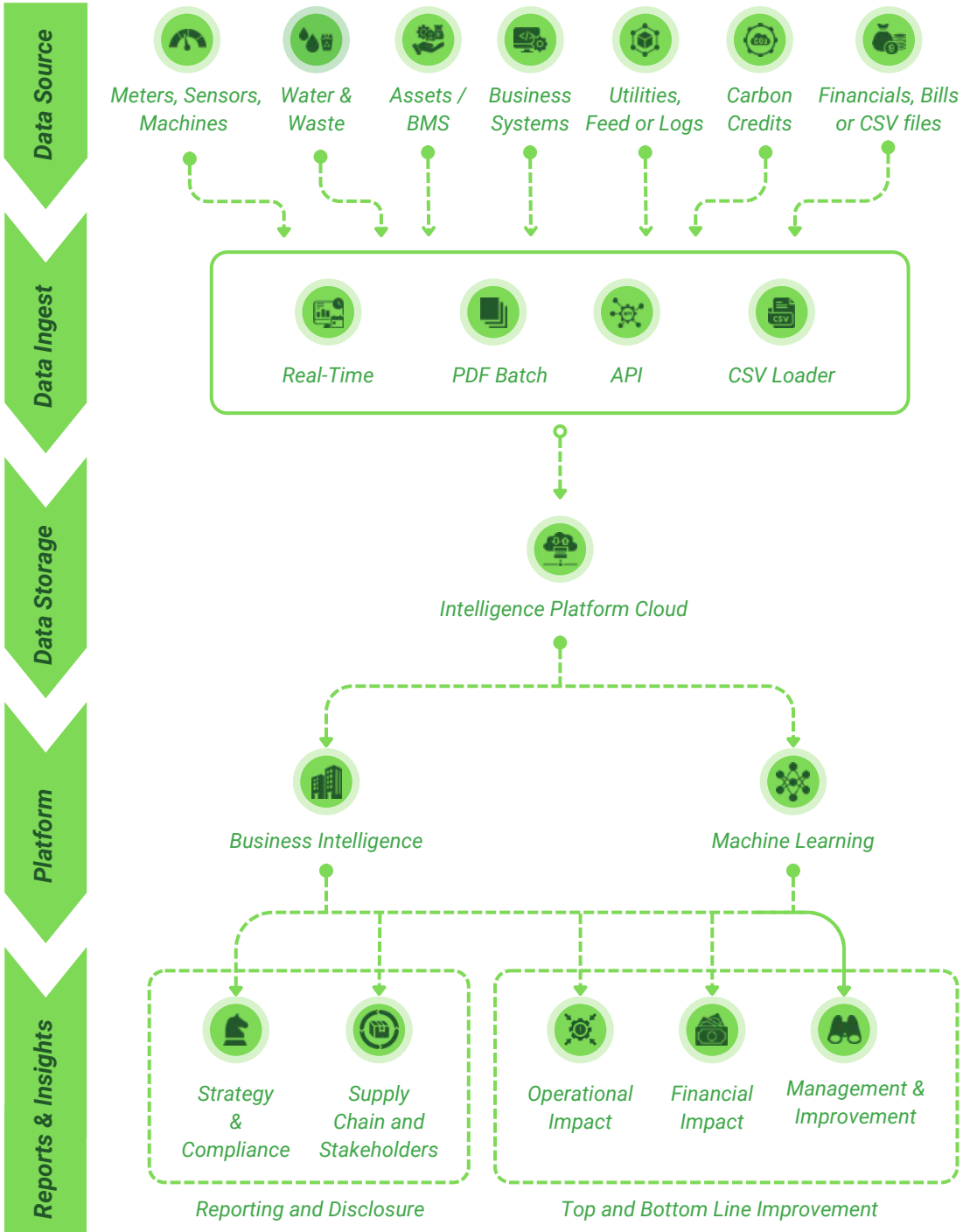
Integration of data from varied sources and multiparametric correlation analysis for actionable insights

Alerting and Alarming

Multi-conditional alerts for proactive approach, rapid response and effective management of critical issues.



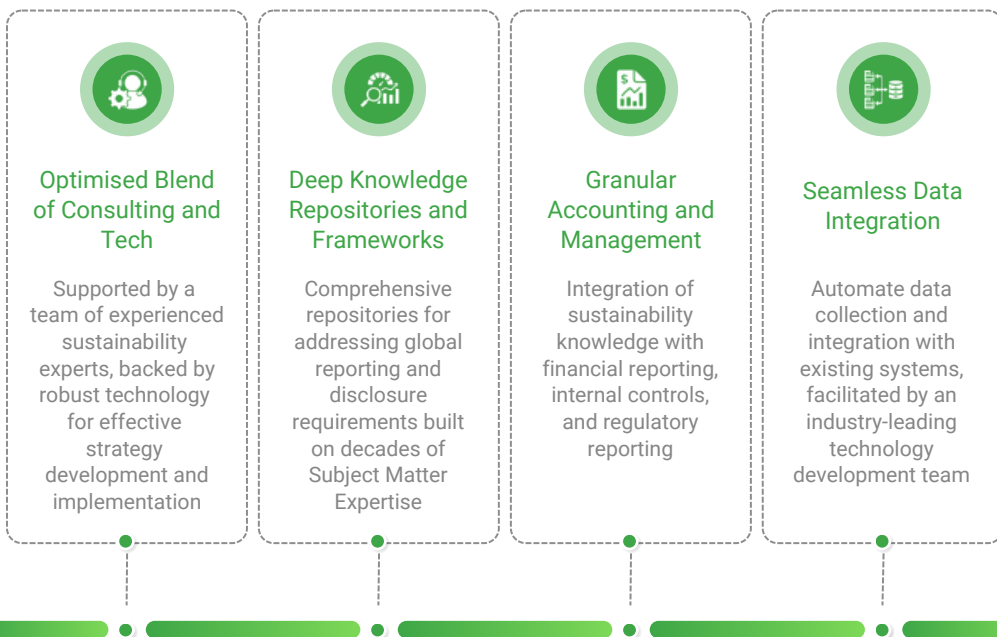
Platform Data Framework



Drive Organisational & Cultural Change with CCR



Why Choose the CCR Intelligence Platform?



Leverage CCR's Intelligence Platform to simplify organisational sustainability reporting and performance, ensuring compliance and fostering true long-term sustainability

Robust Compliance to Reporting Requirements:

- **GHG Inventory Standards Compliance:** ISO 14064 GHG management systems and GHG protocol-compliant emission calculations
- **Global Reporting Initiative (GRI):** Compliant with GRI Standards for sustainability reporting
- **EU Taxonomy:** Compliance with the EU Taxonomy for sustainable activities
- **Task Force on Climate-related Financial Disclosures (TCFD):** Adherence to TCFD recommendations for climate-related financial disclosures
- **Sustainability Accounting Standards Board (SASB):** Reporting in line with SASB standards for industry-specific disclosures
- **Detailed Reporting:** LCA to comprehensive sustainability reporting for supply chains and Scope 3 emissions.
- **UN Global Compact (UNGC):** Reporting on principles of the UN Global Compact
- **Carbon Disclosure Project (CDP):** Integration with CDP reporting requirements
- **Comprehensive Standard Adherence:** Compliance with NGRs Act 2007, ISO 14064, ASRS, ESRS, SASB, SBTi, ISO 50001 Energy Management, ISO 14001 Environmental Management, and many more.
- **Environmental, Social, and Governance (ESG):** Comprehensive ESG reporting for stakeholders



Contact us

🌐 www.ccr.earth

✉ info@ccr.earth

📍 **Australia**
6/18 Blackly Row,
Cockburn Central,
Perth, Western
Australia
Ph:+61 8 64677144

📍 **USA**
884 Sea Island Ln,
Foster City,
California,
Ph:+1 415 658 9958

📍 **UAE**
A2 IFZA Business
Park, Dubai Silicon
Oasis, Dubai

📍 **India**
179/36,12th B-Main
Road 75th E-Cross
6th Block Rajaji
Nagar, Bangalore,
Ph:+91 93504 00005

📍 **New Zealand**
60A Olsen Avenue,
Hillsborough,
Auckland, Ph: +64 27
4444 7859

📍 **Indonesia**
Rukan Permata
Senayan, Blok A-29
Jl. Tentara Pelajar
Kebayoran Lama -
Jakarta Selatan,
Ph :+62 21 5794 0651

📍 **Malaysia**
W-10-6, Subang
Square, Jalan
SS15/4G, SS15,
47500 Subang Jaya,
Selangor Darul Ehsan,
Malaysia.

